

*University of
Massachusetts*

L O W E L L



Backfire

University of Massachusetts Lowell

Backfire



Laying out paper templates to be cut into foam sections.



Paper templates transferred onto foam.

University of Massachusetts Lowell

Backfire



Foam sections are cut on a band saw.



Foam sections after being cut.

University of Massachusetts Lowell

Backfire



Cut foam sections laid out on placement table.



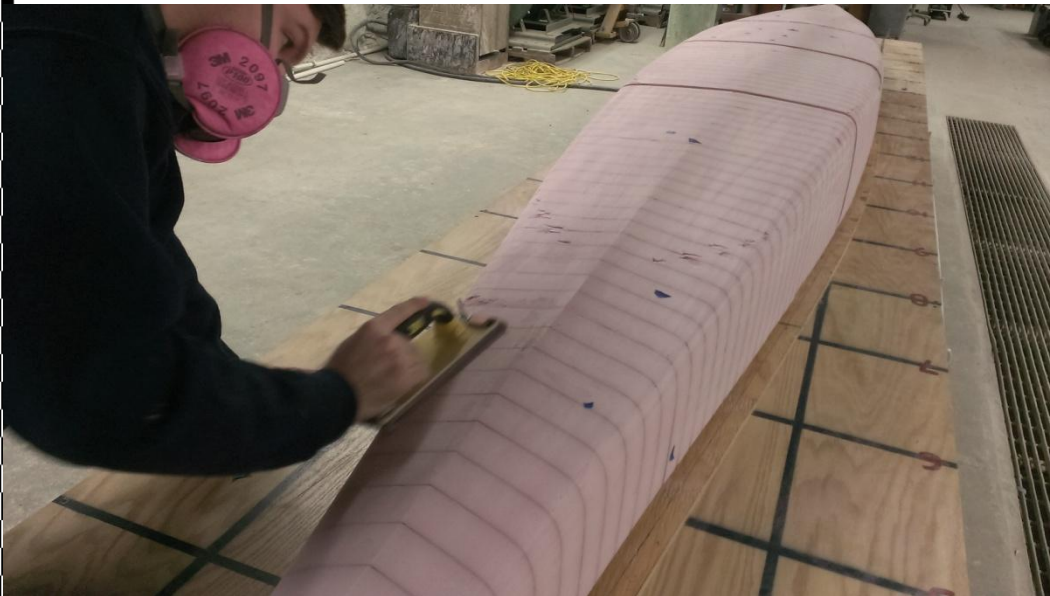
Applying glue to foam section.

University of Massachusetts Lowell

Backfire



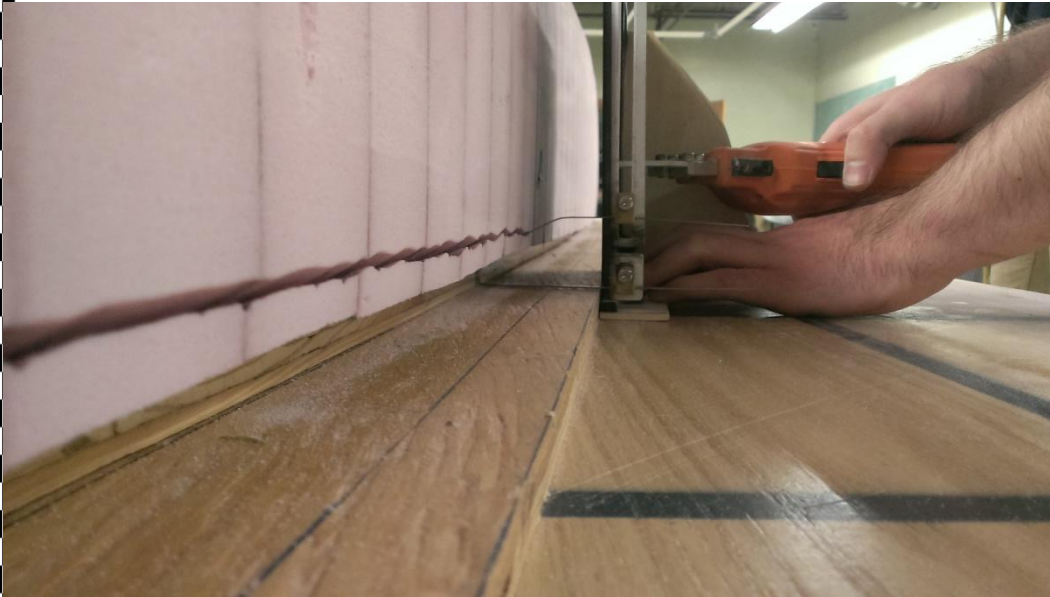
Clamping glued 2 foot foam section together.



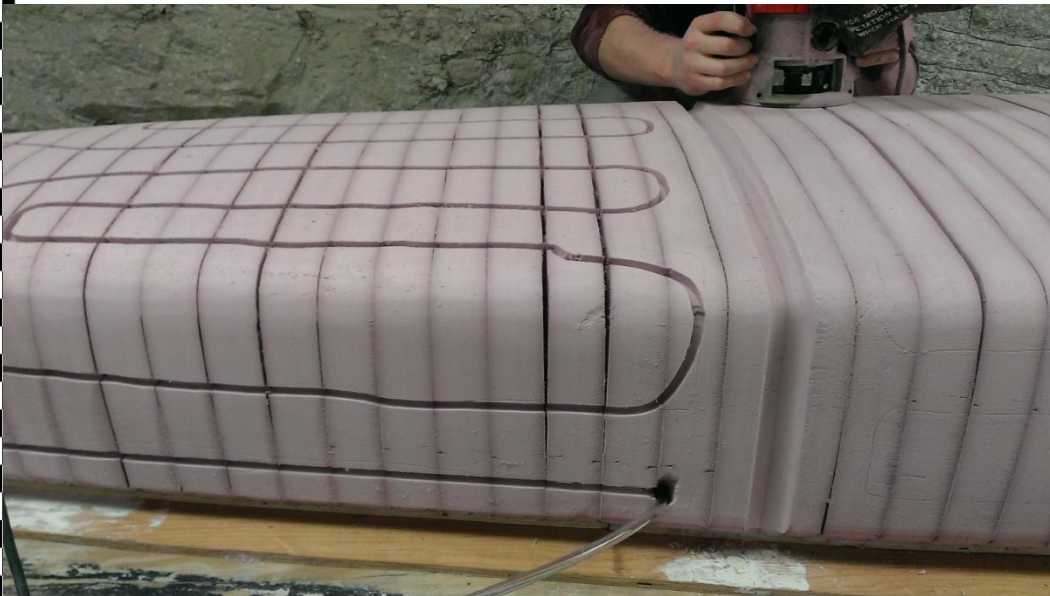
Sanding the assembled mold to correct shape.

University of Massachusetts Lowell

Backfire



Cutting gunwale shape into mold with a hot knife.



Routing cooling channels into mold.

University of Massachusetts Lowell

Backfire



Covering the mold in drywall.



Mold fully assembled and prepped for placement day.

University of Massachusetts Lowell

Backfire



Rough shaped canoe after placement.



Hydration tent assembled around the canoe.

University of Massachusetts Lowell

Backfire



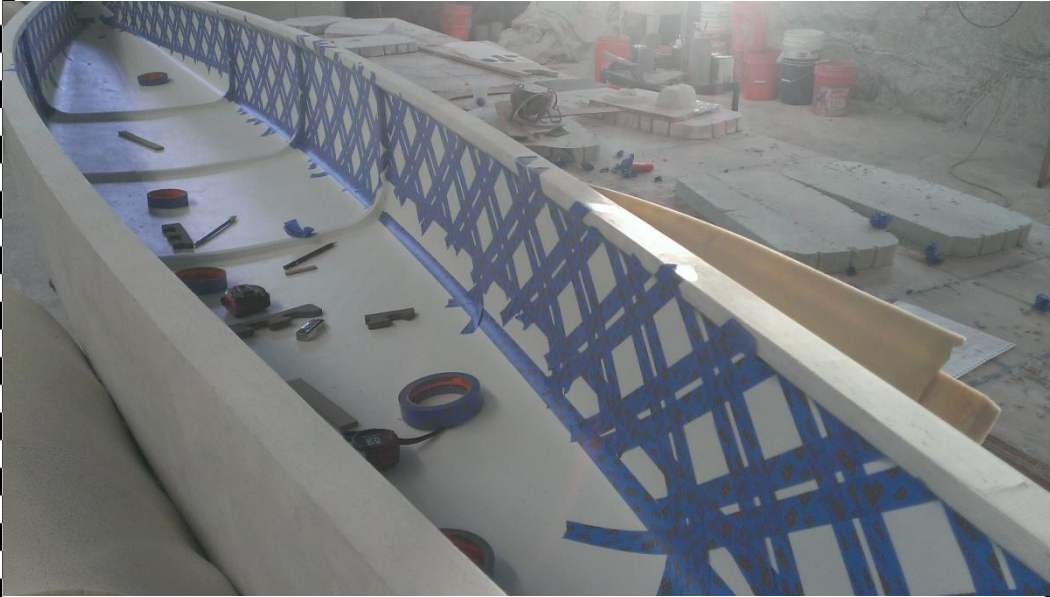
Canoe covered in burlap to help assure a moist cure.



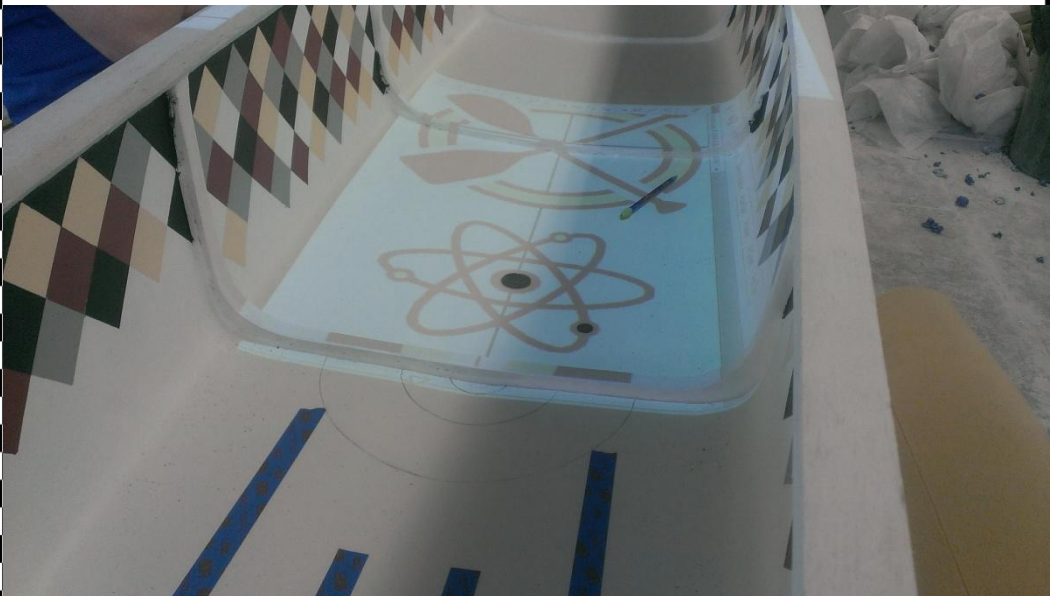
Finished sanding.

University of Massachusetts Lowell

Backfire



Taping sidewall aesthetic pattern.



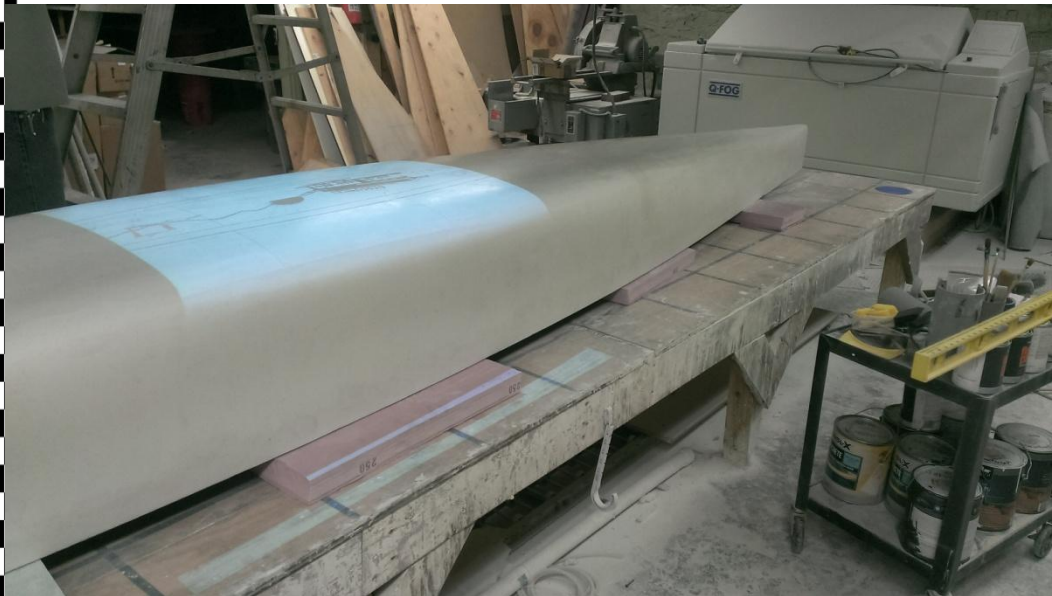
Projecting logos to be stenciled on.

University of Massachusetts Lowell

Backfire



Inside graphics finished.



Projecting mural onto outer hull.

University of Massachusetts Lowell

Backfire



Finished painted hull before sealer.



Hull after first coat of sealer.

University of Massachusetts Lowell

Backfire



Canoe stand as a work in progress.



Display board as a work in progress.